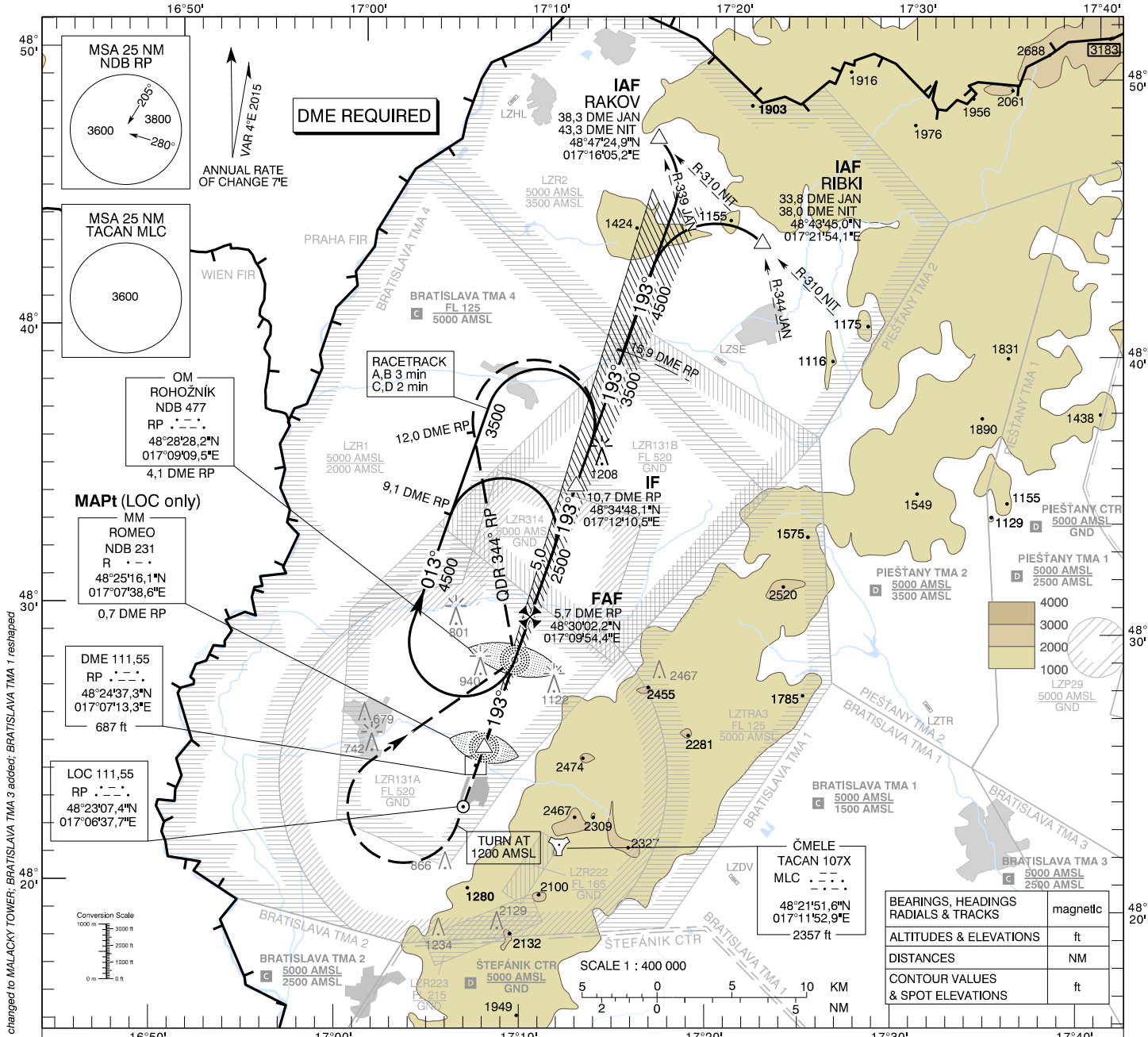


**INSTRUMENT  
APPROACH  
CHART - ICAO**

**TRANSITION ALTITUDE**  
10 000 ft  
AD ELEV 689 - 25 hPa  
THR RWY 19 ELEV 686,4 - 25 hPa

**MALACKY RADAR 120,750 (259,625)**  
**MALACKY TOWER 129,575 (120,750)**

**MALACKY (LZMC)**  
**ILS CAT I or LOC RWY 19**  
ACFT CAT A/B/C/D



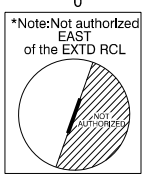
**MISSED APPROACH**

Climb STRAIGHT AHEAD, at 1200 AMSL turn RIGHT to NDB RP, climbing to 3500 AMSL. At NDB RP turn LEFT to track 344° (QDR 344° RP), at 12 DME RP turn RIGHT to join the hold or initiate another approach. MAX IAS 185 kt. No turn before MM.

**ILS RDH 55,2**

THR RWY 19 ELEV 686,4 - 25 hPa  
NM to/from THR RWY 19

		OCA (OCH)			
		A	B	C	D
Straight-In Approach	CAT I	2.5% ft 992 (306)	1004 (318)	1012 (326)	1023 (337)
		4.0% ft 918 (232)	930 (244)	938 (252)	949 (263)
	LOC	ft 1110 (421)			
Circling (* see Note)		ft 1120 (431)	1190 (501)	1650 (961)	1810 (1121)
VIS		m 1800	2800	3600	4600



DME RP	NM	5,0	4,0	3,0	2,0	1,0
ALTITUDES	ft	2275	1957	1638	1320	1001

Ground speed	kt	70	90	100	120	140	160
FAF - MAPt (5.0 NM)	min:sec	4:17	3:20	3:00	2:30	2:09	1:53
Rate of descent (5,2%)	ft/min	372	478	531	637	743	849

Timing not authorized for defining the MAPt.

CHANGES: LZR01, LZR02, LZTRA03 renamed to LZR1, LZR2, LZTRA3, call sign MALACKY VEZA changed to MALACKY TOWER; BRATISLAVA TMA 3 added; BRATISLAVA TMA 1 reshaped